


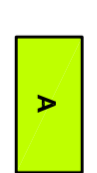
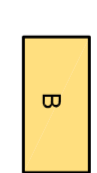
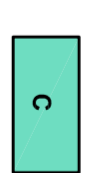

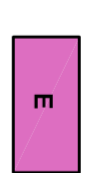
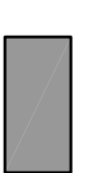
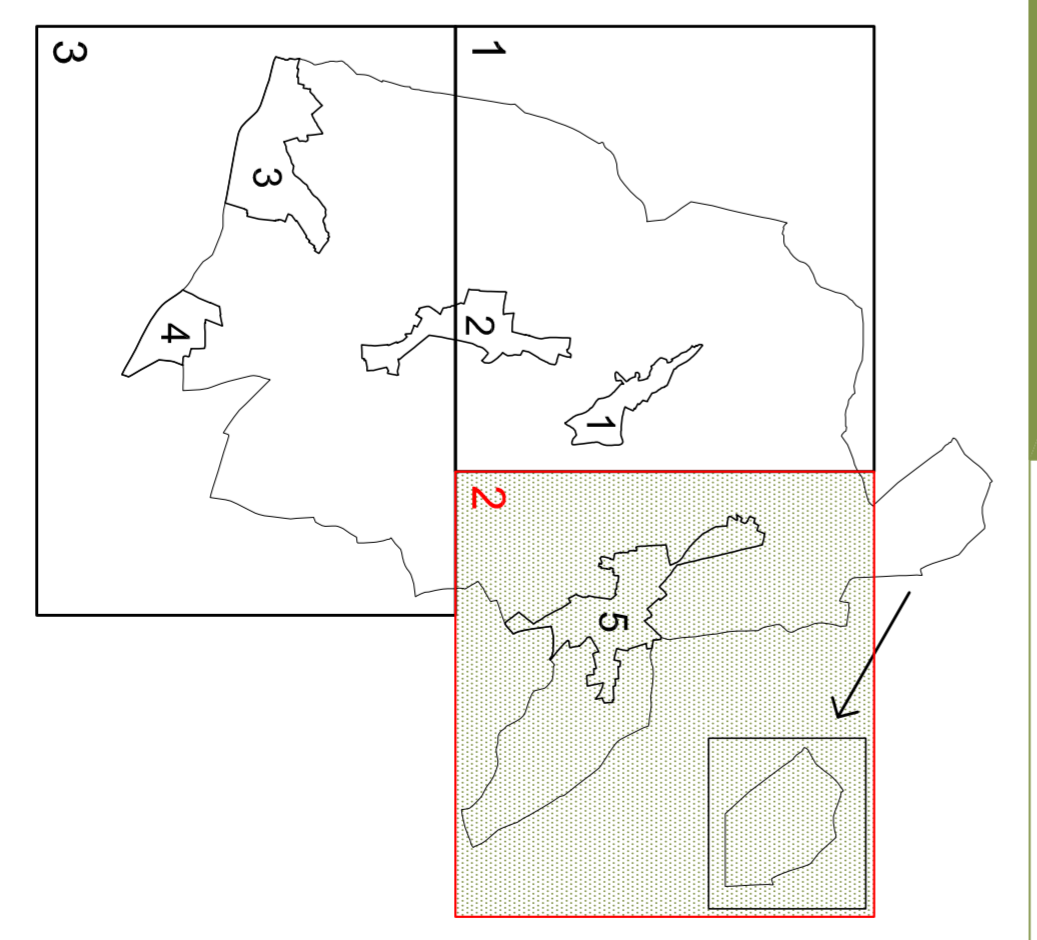


- LEGENDA**
-  Contorno comunale
  -  Limite delle UTOE
  -  Limite Unità fitogeografiche
  -  **A**  
Argille, argille limose e sabbiose consistenti con livelli di sabbie addensate
  -  **B**  
Conglomerati e calcili in matrice argillo-sabbiosa addensati
  -  **C**  
Sabbie, sabbie argillose addensate con livelli di calciloli e conglomerati
  -  **D**  
Ghiele e calcili mediamente addensati in matrice limo-sabbiosa e argillosa
  -  **E**  
Sabbie, sabbie limose e fini scarsamente addensati, limi argillosi e argille poco consistenti
  -  **E**  
Terreno di natura eterogenea

  
**Comune di Montecatini**  
 Provincia di Lucca



Servizio:  
 Giuseppe Pieretti  
 Assessore all'Urbanistica  
 Maurizio Favatelli  
 Responsabile del procedimento:  
 Geom. Paolo Minelli  
 Geniale della Comunicazione:  
 Cinzia Carrara  
 Direttore Generale e Coordinatore  
 del Servizio Urbanistico:  
 Studio INCEO  
 Con la consulenza di:  
 Avv. Giancarlo Arbilla  
 Arch. Chiara Tesi  
 Geom. Alessandro Ghetti  
 Silvia Giunelli

Montecatini, gennaio 2009

# Regolamento urbanistico GEO A.2 - Foglio 2

scala 1:5.000

revisione quinquennale - art. 55 L.R. 03.01.2005 n. 1